



# SAW Components

Data Sheet B3680





**SAW Components**

**B3680**

**Low-Loss Filter**

**352,0 MHz**

**Data Sheet**

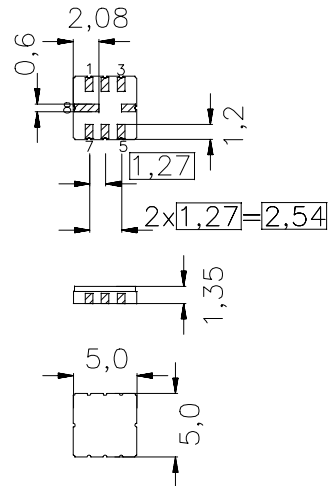
**Ceramic package QCC8C**

**Features**

- Low-loss IF filter for Wireless LAN
- Low insertion attenuation
- Low amplitude ripple
- Usable passband 12 MHz
- Balanced or unbalanced operation
- Hermetically sealed ceramic package
- Package for Surface Mounted Technology (SMT)

**Terminals**

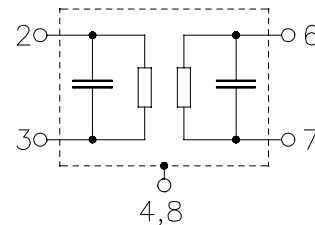
- Gold plated



typ. Dimensions in mm, approx. weight 0,1 g

**Pin configuration**

- |      |                                    |
|------|------------------------------------|
| 2, 3 | Input, input ground or bal. input  |
| 6, 7 | Output, outp. ground or bal. outp. |
| 4, 8 | Case ground                        |
| 1, 5 | Ground                             |



Type	Ordering code	Marking and Package according to	Packing according to
B3680	B39351-B3680-U310	C61157-A7-A56	F61074-V8070-Z000

Electrostatic Sensitive Device (ESD)

**Maximum ratings**

Operable temperature range	$T_A$	-25 / +85	°C
Storage temperature range	$T_{stg}$	-40 / +85	°C
DC voltage	$V_{DC}$	0	V
Source power	$P_s$	10	dBm



**SAW Components**

**B3680**

**Low-Loss Filter**

**352,0 MHz**

**Data Sheet**

**Characteristics**

Operating temperature range:

$$T_A = 25 \text{ }^\circ\text{C}$$

Terminating source impedance:

$$Z_S = 50 \text{ } \Omega \text{ and matching network}$$

Terminating load impedance:

$$Z_L = 50 \text{ } \Omega \text{ and matching network}$$

		<b>min.</b>	<b>typ.</b>	<b>max.</b>	
<b>Nominal frequency</b>	$f_N$	—	352,0	—	MHz
<b>Minimum insertion attenuation</b>	$\alpha_{\min}$	—	2,7	3,0	dB
<b>Amplitude ripple in passband (p-p)</b> 346,0 .... 358,0 MHz	$\Delta\alpha$	—	1,4	2,5	dB
<b>Group delay ripple (p-p)</b> 346,0 .... 358,0 MHz	$\Delta\tau$	—	40	100	ns
346,5 .... 358,0 MHz		—	40	80	ns
<b>Pass bandwidth</b> $\alpha_{\text{rel}} \leq 3\text{dB}$	$B_{3\text{dB}}$	15,0	15,6	—	MHz
<b>Relative attenuation (relative to <math>\alpha_{\min}</math>)</b>	$\alpha_{\text{rel}}$				
0,3 .... 333,0 MHz		45	54	—	dB
333,0 .... 341,0 MHz		11	34	—	dB
363,0 .... 366,0 MHz		11	19	—	dB
366,0 .... 371,0 MHz		22	25	—	dB
371,0 .... 374,0 MHz		25	35	—	dB
374,0 .... 392,0 MHz		34	36	—	dB
392,0 .... 400,0 MHz		45	54	—	dB
<b>Temperature coefficient of frequency</b>	$TC_f$	—	-70	—	ppm/K



**SAW Components**

**B3680**

**Low-Loss Filter**

**352,0 MHz**

**Data Sheet**

**Characteristics**

Operating temperature range:  $T_A = 0 \dots 85 \text{ }^\circ\text{C}$   
 Terminating source impedance:  $Z_S = 50 \text{ } \Omega$  and matching network  
 Terminating load impedance:  $Z_L = 50 \text{ } \Omega$  and matching network

		<b>min.</b>	<b>typ.</b>	<b>max.</b>	
<b>Nominal frequency</b>	$f_N$	—	352,0	—	MHz
<b>Minimum insertion attenuation</b>	$\alpha_{\min}$	—	2,7	3,5	dB
<b>Amplitude ripple in passband (p-p)</b> 346,0 .... 358,0 MHz	$\Delta\alpha$	—	1,4	3,0	dB
<b>Group delay ripple (p-p)</b> 346,0 .... 358,0 MHz	$\Delta\tau$	—	40	170	ns
346,5 .... 358,0 MHz		—	40	120	ns
<b>Pass bandwidth</b> $\alpha_{\text{rel}} \leq 3\text{dB}$	$B_{3\text{dB}}$	14,0	15,6	—	MHz
<b>Relative attenuation (relative to <math>\alpha_{\min}</math>)</b>	$\alpha_{\text{rel}}$				
0,3 .... 333,0 MHz		45	54	—	dB
333,0 .... 341,0 MHz		11	34	—	dB
363,0 .... 366,0 MHz		11	19	—	dB
366,0 .... 371,0 MHz		22	25	—	dB
371,0 .... 374,0 MHz		25	35	—	dB
374,0 .... 392,0 MHz		34	36	—	dB
392,0 .... 400,0 MHz		45	54	—	dB
<b>Temperature coefficient of frequency</b>	$TC_f$	—	-70	—	ppm/K



SAW Components

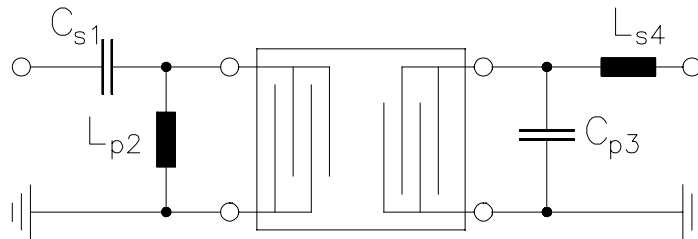
B3680

Low-Loss Filter

352,0 MHz

Data Sheet

matching network:



$$C_{s1} = 10 \text{ pF}$$

$$L_{p2} = 27 \text{ nH}$$

$$C_{p3} = 1,2 \text{ pF}$$

$$L_{s4} = 27 \text{ nH}$$



SAW Components

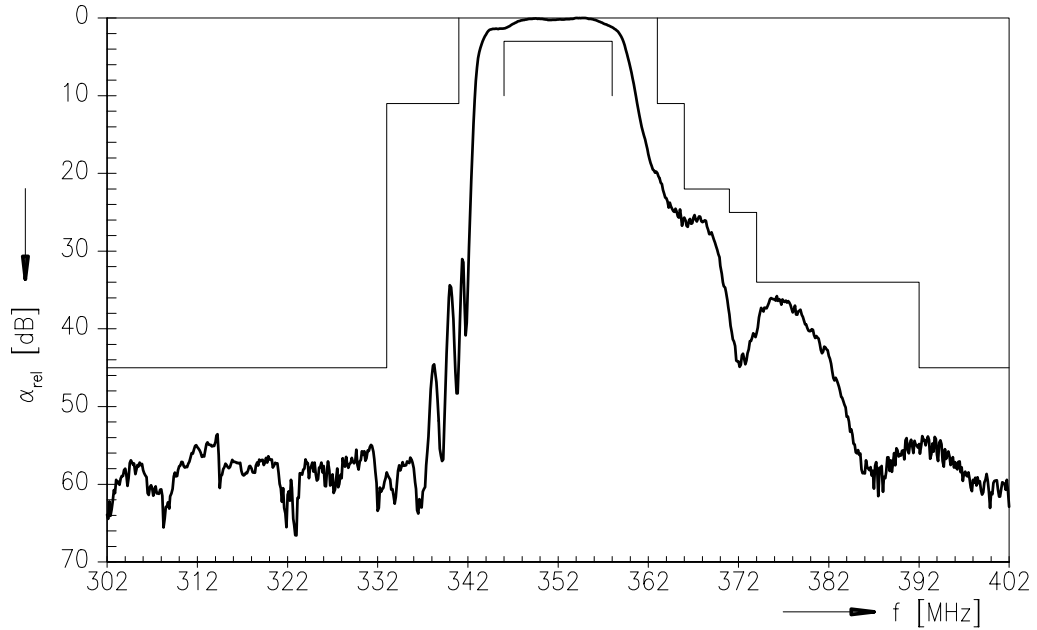
B3680

Low-Loss Filter

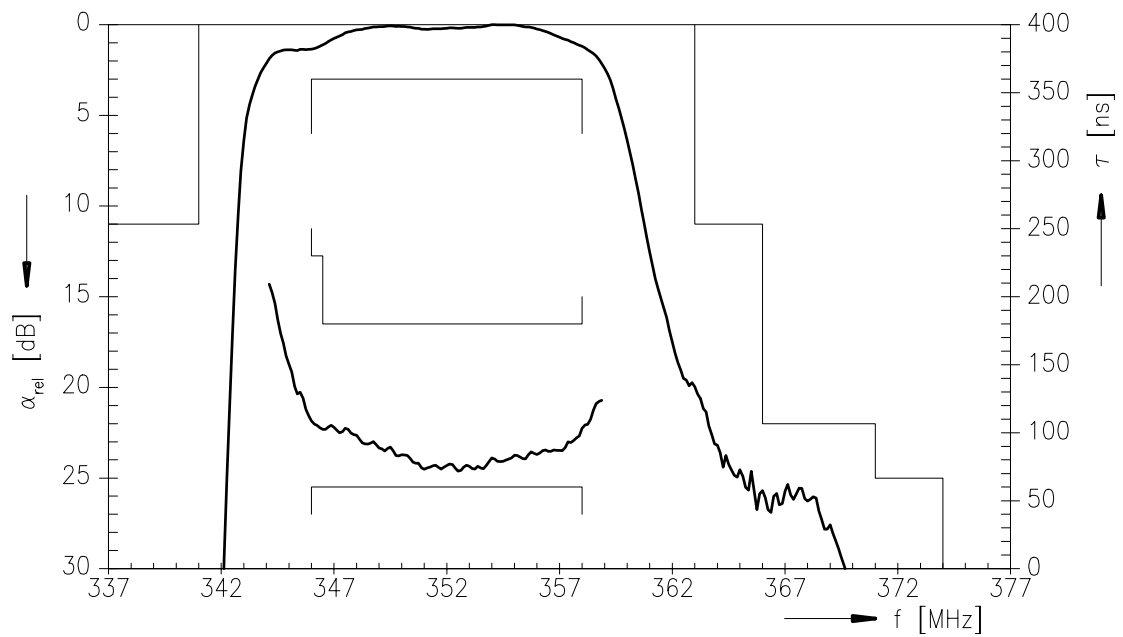
352,0 MHz

Data Sheet

Transfer function:



Transfer function (pass band):





**SAW Components**

**B3680**

**Low-Loss Filter**

**352,0 MHz**

Data Sheet

**Published by EPCOS AG**

**SAW MC WT, P.O. Box 80 17 09, 81617 Munich, GERMANY**

**☎ ++49 89 636 09, FAX (0 89) 636-2 26 89**

© EPCOS AG 2002. Reproduction, publication and dissemination of this brochure and the information contained therein without EPCOS' prior express consent is prohibited.

Purchase orders are subject to the General Conditions for the Supply of Products and Services of the Electrical and Electronics Industry recommended by the ZVEI (German Electrical and Electronic Manufacturers' Association), unless otherwise agreed.

This brochure replaces the previous edition.

For questions on technology, prices and delivery please contact the Sales Offices of EPCOS AG or the international Representatives.

Due to technical requirements components may contain dangerous substances. For information on the type in question please also contact one of our Sales Offices.